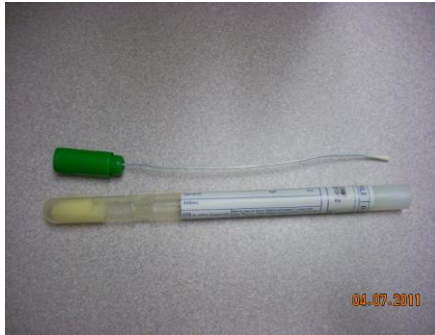


Culture Collection Devices for Newton-Wellesley Hospital Lab



1.



2.

1. Mini-Tipped Green Nasopharyngeal Swab

Used for: Rapid Influenza A/B

2. UTM or Xpert Viral Transport Medium

Used for: Influenza A/B & RSV PCR



3.

OR



4.

3. Culturette: White Swab and 4. Culturette: Red Swab (2) **Used for:** Any routine bacterial cultures, including:

- | | | | | |
|---------------|-----------------|---------------------------|---------------------------|----------------|
| Ear Culture | Fungal Culture | Nasal Culture | Strep A Throat Screen | Tissue Culture |
| Eye Culture | Genital Culture | Rectal Screen for Strep A | Strep B Vag/Rectal Screen | VRE Screen |
| Fluid Culture | MRSA Screen | Skin Culture | Throat Culture | Wound Culture |



5.

5. BD Universal Viral Transport for Viruses, Chlamydiae, Mycoplasmas and Ureaplasmas

Used for: Herpes Culture, H Simplex Type



6.



COPAN swab shafts are scored

6. COPAN Red Swab (2)

Used for: MRSA/MSSA PCR & Group B PCR

Note: These have swab shafts that are scored. Required for testing instrumentation.